

HALLIBURTON

HIGH RESOLUTION
INDUCTION
GAMMA
5", 2" = 100'

COMPANY VULCAN POWER CO.
WELL 86A-15
FIELD SALT WELLS
COUNTY CHURCHILL STATE NV

COMPANY VULCAN POWER CO.
WELL 86A-15
FIELD SALT WELLS
COUNTY CHURCHILL STATE NV
API No. 27-001-90367
Location UTME 382560
TMIN 435094
Other Services
FIAC
HRIT
FWST
Sect 15 Twp 17N Rge 30E

Permanent Datum GL Elev 4884'
Log measured from K.B. 16.0' above perm. datum
Drilling measured from K.B. Elev. : K.B. 4900'
D.F. -----
G.L. 4884'

Date	SEP-02-2008		
Run No.	ONE		
Depth - Driller	750'		
Depth - Logger	750'		
Bottom - Logged Interval	742'		
Top - Logged Interval	80'		
Casing - Driller	20.000" @ 311'	@	@
Casing - Logger	311'		
Bit Size	17.500"		
Type Fluid in Hole	GEL		
Dens. Visc.	9.3 64.0		
Ph Fluid Loss	8.5 12.0		
Source of Sample	FLOWLINE		
Rm @ Meas. Temp.	3.720 @ 68 F	@	@
Rmf @ Meas. Temp.	4.370 @ 67 F	@	@
Rmc @ Meas. Temp.	3.920 @ 64 F	@	@
Source Rmf Rmc	MEAS MEAS		
Rm @ BHT	1.254 @ 215 F	@	@
Time Since Circ.	1600 09-02		
Time on Bottom	2130 09-02		
Max. Rec. Temp.	215 F @ TD	@	@
Equip. Location	43699 WDL D		
Recorded By	G. ROUSSEAU		
Witnessed By	N. PETERSON	V. WELCH	

— Fold Here —

Service Ticket No.: 6148468		API Serial No.: 27-001-90367		PGM Version: XL v5.8			
CHANGE IN MUD TYPE OR ADDITIONAL SAMPLES				RESISTIVITY SCALE CHANGES			
Date Sample No.				Type Log	Depth	Scale Up Hole	Scale Down Hole
Depth – Driller							
Type Fluid							
in Hole							
Dens. Visc.							
Ph Fluid Loss							
Source of Sample				RESISTIVITY EQUIPMENT DATA			
Rm @ Meas. Temp.	@	@	Run No.	Tool Type & No.	Pad Type	Tool Pos.	Other
Rmf @ Meas. Temp.	@	@	ONE	HRIT #211_132	NA	1.50" SO	NA
Rmc @ Meas. Temp.	@	@					
Source Rmf Rmc							
Rm @ BHT	@	@					
Rmf @ BHT	@	@					
Rmc @ BHT	@	@					
EQUIPMENT DATA							
GAMMA		ACOUSTIC		DENSITY		NEUTRON	
Run No.	ONE	Run No.	ONE	Run No.		Run No.	
Serial No.	A-175	Serial No.	2458 099	Serial No.		Serial No.	
Model No.	NGRT	Model No.	305B FWS	Model No.		Model No.	
Diameter	3.625"	No. of Cent.	THREE	Diameter		Diameter	
Detector Model No.	432	Spacing	1 FOOT	Log Type		Log Type	
Type	SCINT			Source Type		Source Type	
Length	4.00"	LSA [Y / N]	NO	Serial No.		Serial No.	
Distance to Source	9.0'	FWDA [Y / N]	YES	Strength		Strength	

[illegible]

DIRECTIONAL INFORMATION

Maximum Deviation		deg. @		KOP	
-------------------	--	--------	--	-----	--

Remarks:

ANNULAR HOLE VOLUME CALCULATED USING 13.375" CASING.

RUN 1: 09-02-2008, HRID-FIAC-HRTT-NGRT RUN IN COMBINATION.

RUN 2: 09-02-2008. FWST-HRTT-FIAC-NGRT RUN IN COMBINATION.

MRT RUN 1: 1-212F, 2-212F, 3-216F, 09-02-2008 2215 HR.

MRT RUN 2: 1-212F, 2-212F, 3-216F. 09-03-2008 0030 HR.
--

CREW: M. EMERSON, I. PYLES.

RIG: ROCKET DRILLING NO. 2.

HALLIBURTON DOES NOT GUARANTEE THE ACCURACY OF ANY INTERPRETATION OF THE LOG DATA, CONVERSION OF LOG DATA TO PHYSICAL ROCK PARAMETERS OR RECOMMENDATIONS WHICH MAY BE GIVEN BY HALLIBURTON PERSONNEL OR WHICH APPEAR ON THE LOG OR IN ANY OTHER FORM. ANY USER OF SUCH DATA, INTERPRETATIONS, CONVERSIONS, OR RECOMMENDATIONS AGREES THAT HALLIBURTON IS NOT RESPONSIBLE EXCEPT WHERE DUE TO GROSS NEGLIGENCE OR WILLFUL MISCONDUCT, FOR ANY LOSS, DAMAGES, OR EXPENSES RESULTING FROM THE USE THEREOF.

HALLIBURTON

Version No: | hc:3.0

Data File: MERGE.cls

Format File: 5.TIF.spc

Plot Time: 2008-09-03 10:55:30

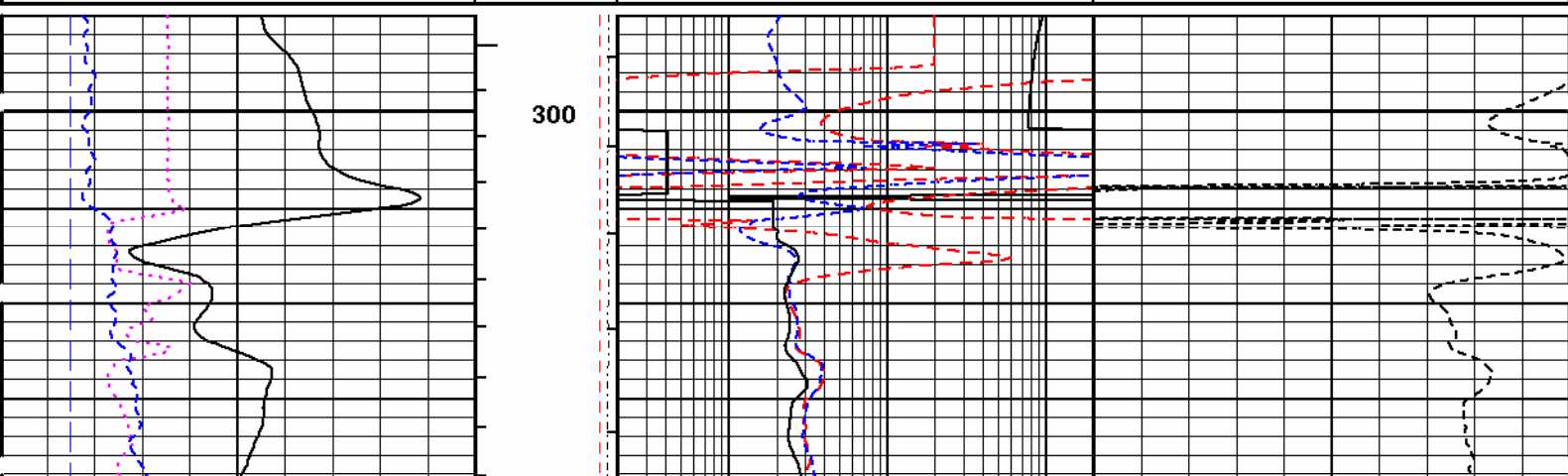
Database Time: 09:06:35

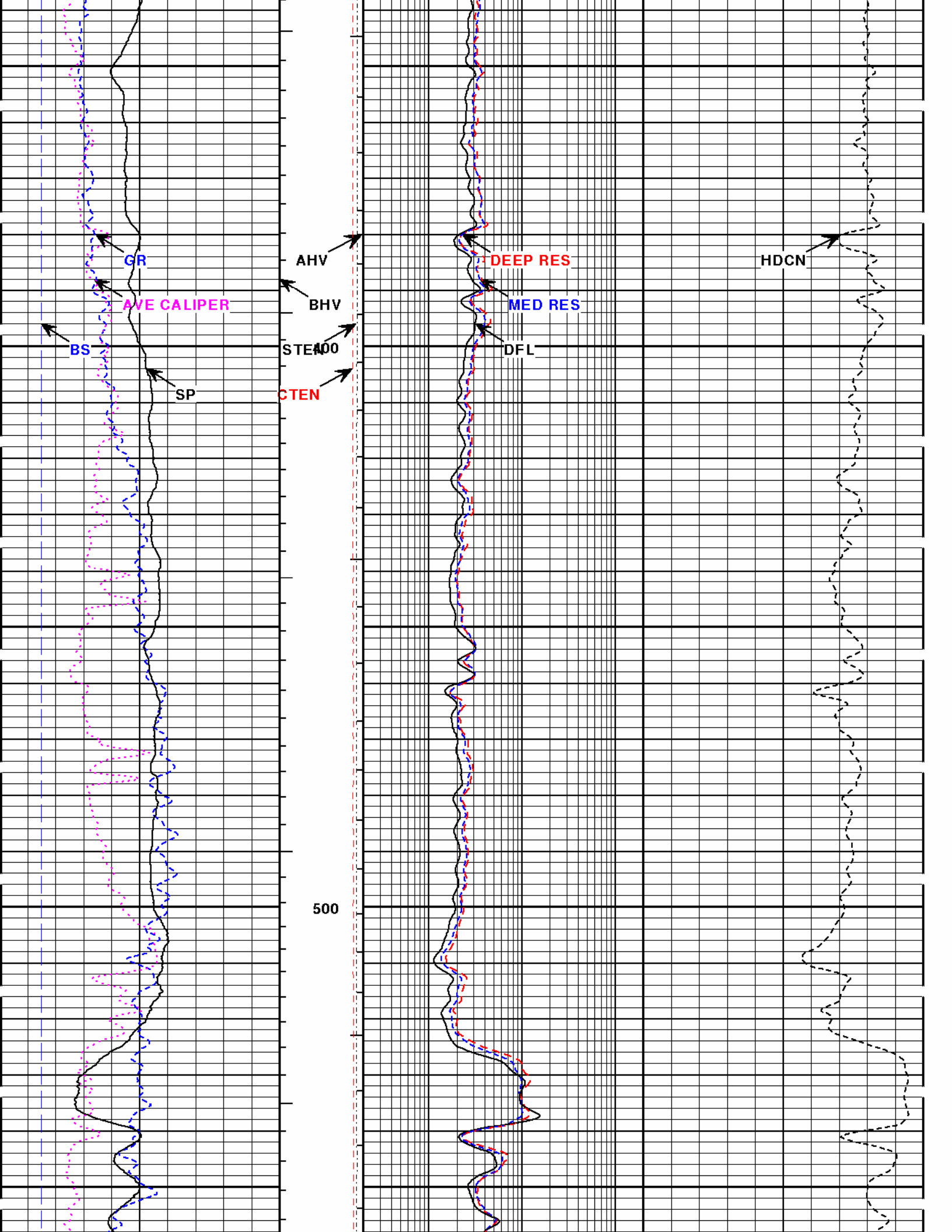
Top Depth: 290.00

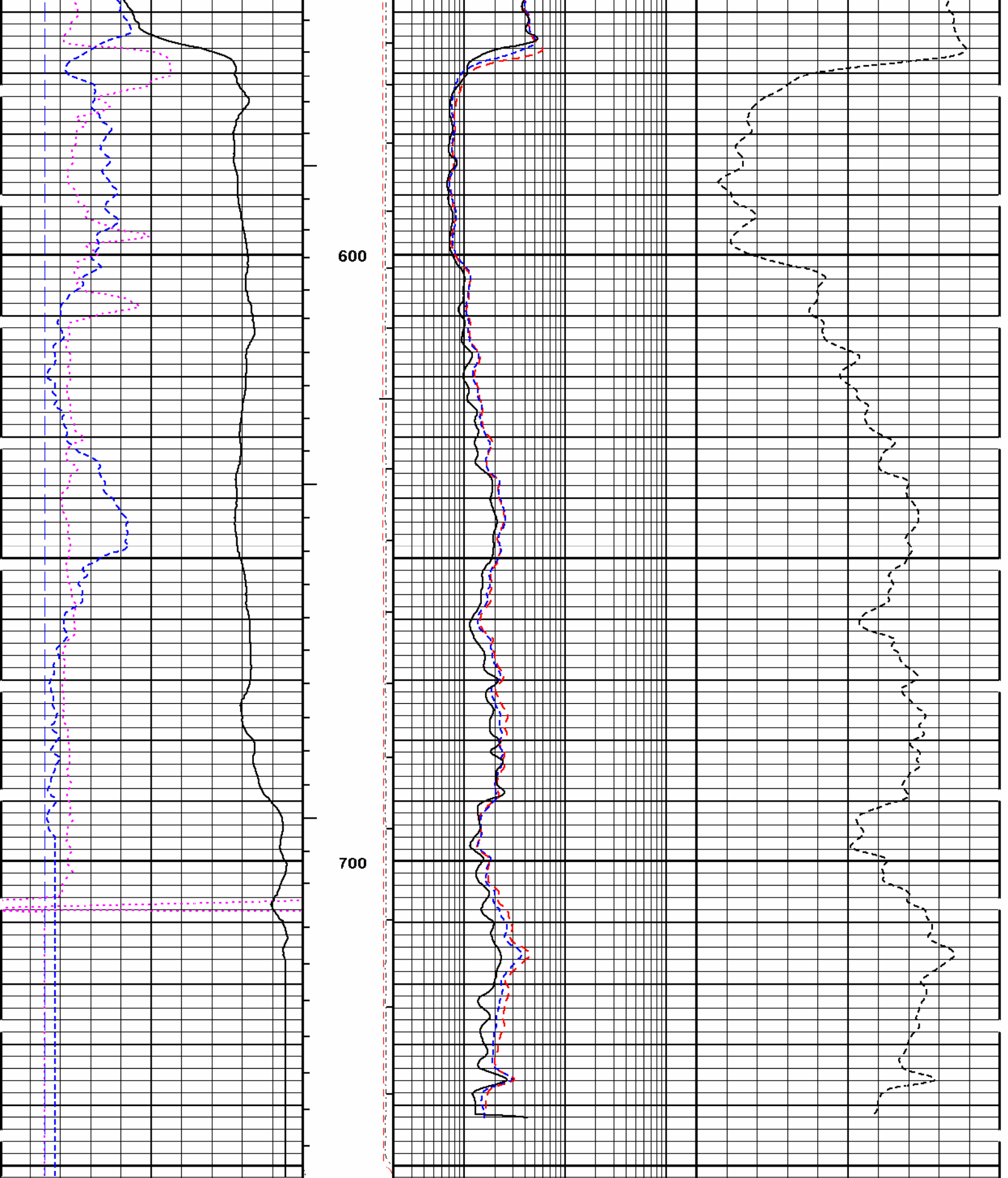
Bottom Depth: 752.58

HALLIBURTON

<div>GR</div> <div>0 API 150</div>	<div>AHV</div> <div>100 FT3 0</div>	<div>DEEP RES</div> <div>0.2 OHMM 200</div>	<div>HDCN</div> <div>1500 MMHO 0</div>
<div>AVE CALIPER</div> <div>16 INCHES 26</div>	<div>BHV</div> <div>0 FT3 100</div>	<div>MED RES</div> <div>0.2 OHMM 200</div>	
<div>BS</div> <div>16 INCH 26</div>	<div>STEN</div> <div>10500 500</div>	<div>DFL</div> <div>0.2 OHM 200</div>	
<div>SP</div> <div>-]10[+</div>	<div>CTEN</div> <div>10000 0</div> <div>1:240</div> <div>FT.</div>		







<div>SP</div> <div>-]10[+</div>	<div>1:240</div> <div>FT.</div> <div>CTEN</div> <div>10000 0</div>		
<div>BS</div>	<div>STEN</div>	<div>DFL</div>	

16	INCH	26	10500	500	0.2	OHM	200	
AVE CALIPER			BHV		MED RES			
16	INCHES	26	0	FT3 100	0.2	OHMM	200	
GR			AHV		DEEP RES			HDCN
0	API	150	100 FT3	0	0.2	OHMM	200	1500
								MMHO
								0

HALLIBURTON

Version No: | hc:3.0
Data File: MERGE.cls
Format File: 5.TIF.spc
Plot Time: 2008-09-03 10:55:32
Database Time: 09:06:35

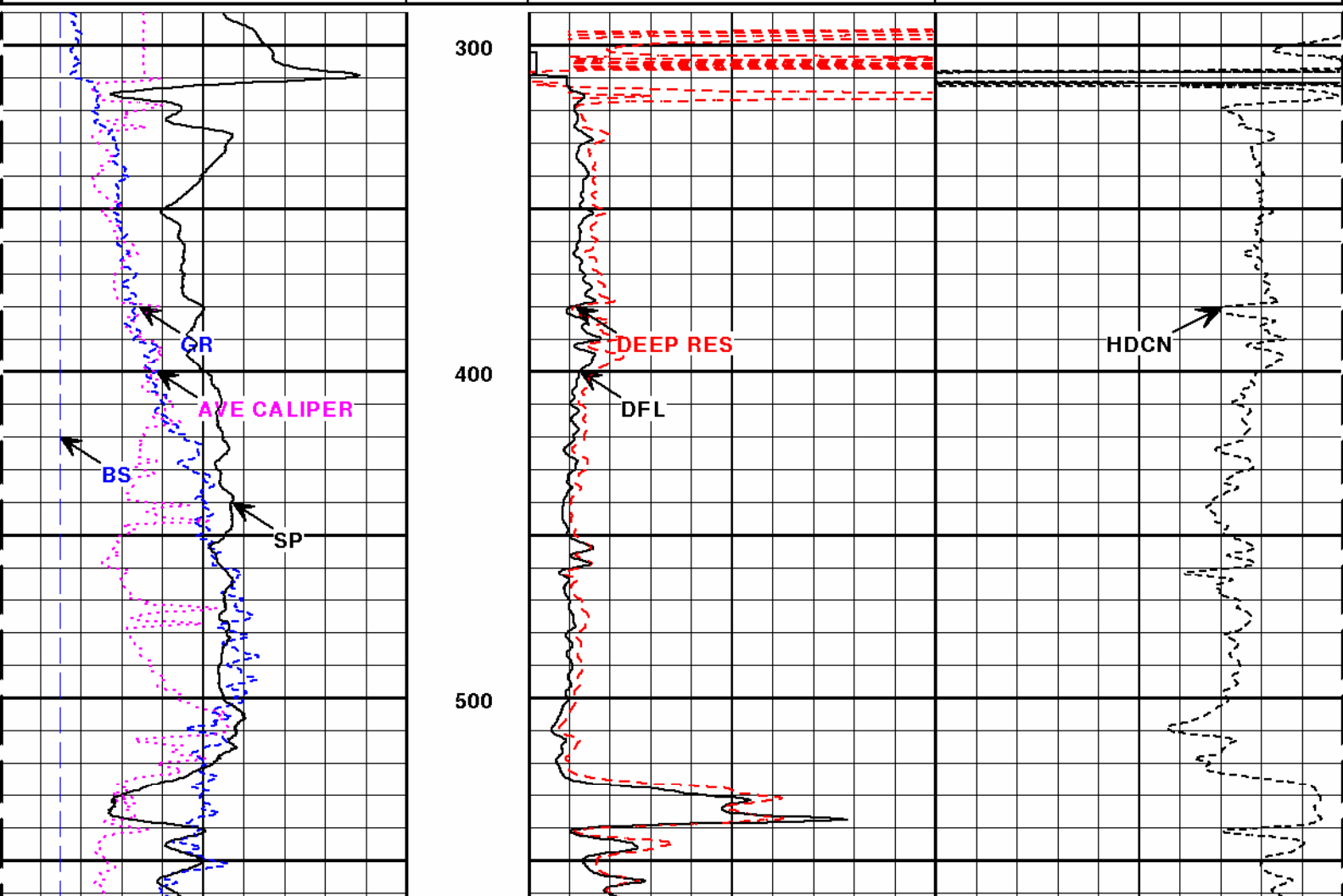
Top Depth: 290.00
Bottom Depth: 752.58

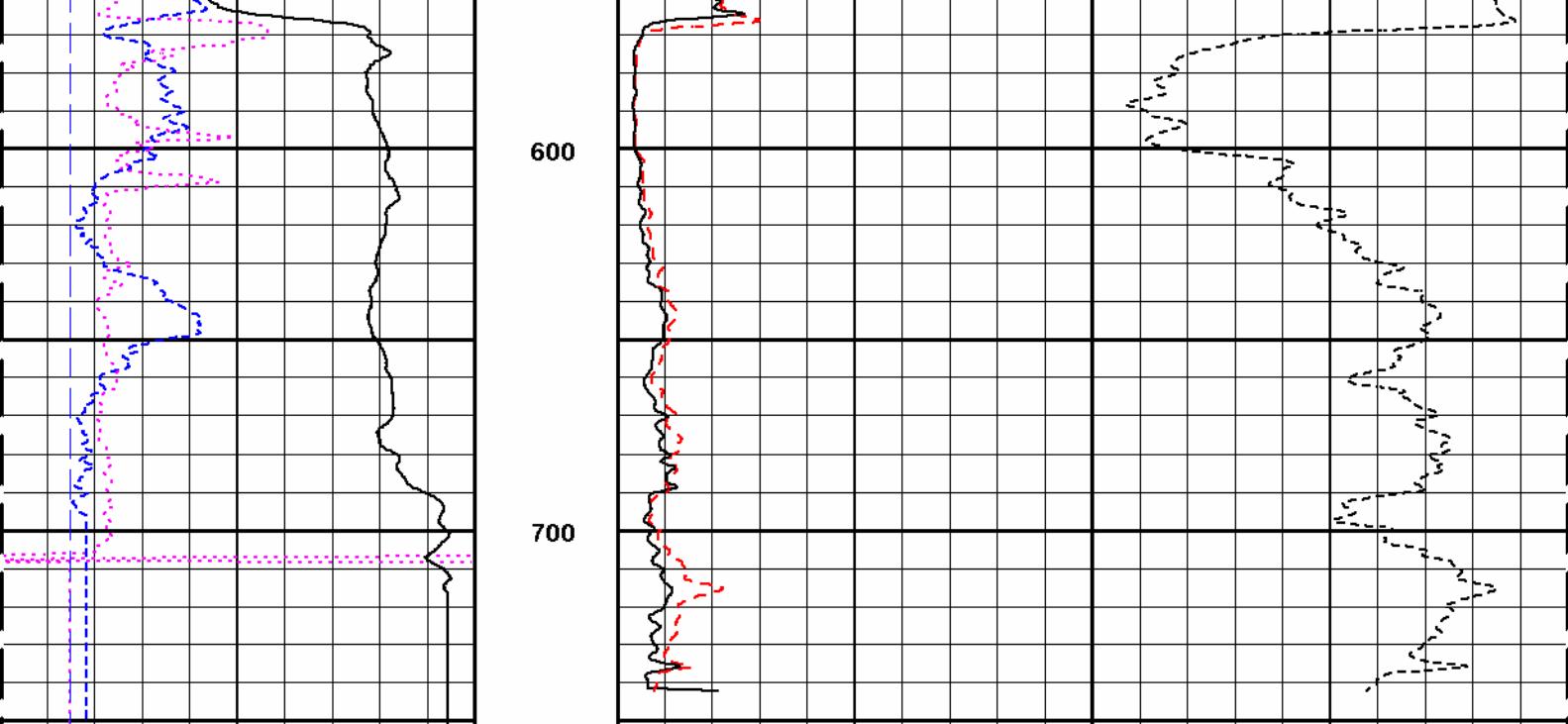
HALLIBURTON

Version No: | hc:3.0
Data File: MERGE.cls
Format File: 2.TIF.spc
Plot Time: 2008-09-03 10:55:41
Database Time: 09:06:35

Top Depth: 290.00
Bottom Depth: 752.58

GR	1:600	DEEP RES	HDCN
API	FT.	OHMM	MMHO
150		20	0
AVE CALIPER		DFL	
INCHES		OHMM	
26		20	
BS			
INCH			
26			
SP			
-]10[+			





SP		1:600 FT.				
-]10[+						
BS						
16	26					
INCH						
AVE CALIPER			DFL			
16			0	OHMM	20	
INCHES						
26						
GR			DEEP RES		HDCN	
0			0	OHMM	20	1500
API						MMHO
150						0

HALLIBURTON

Version No: | hc:3.0
 Data File: MERGE.cls
 Format File: 2.TIF.spc
 Plot Time: 2008-09-03 10:55:43
 Database Time: 09:06:35

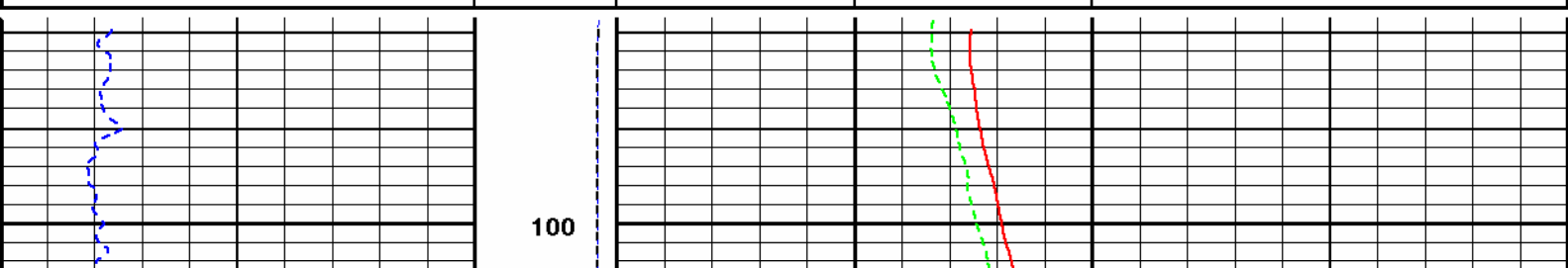
Top Depth: 290.00
 Bottom Depth: 752.58

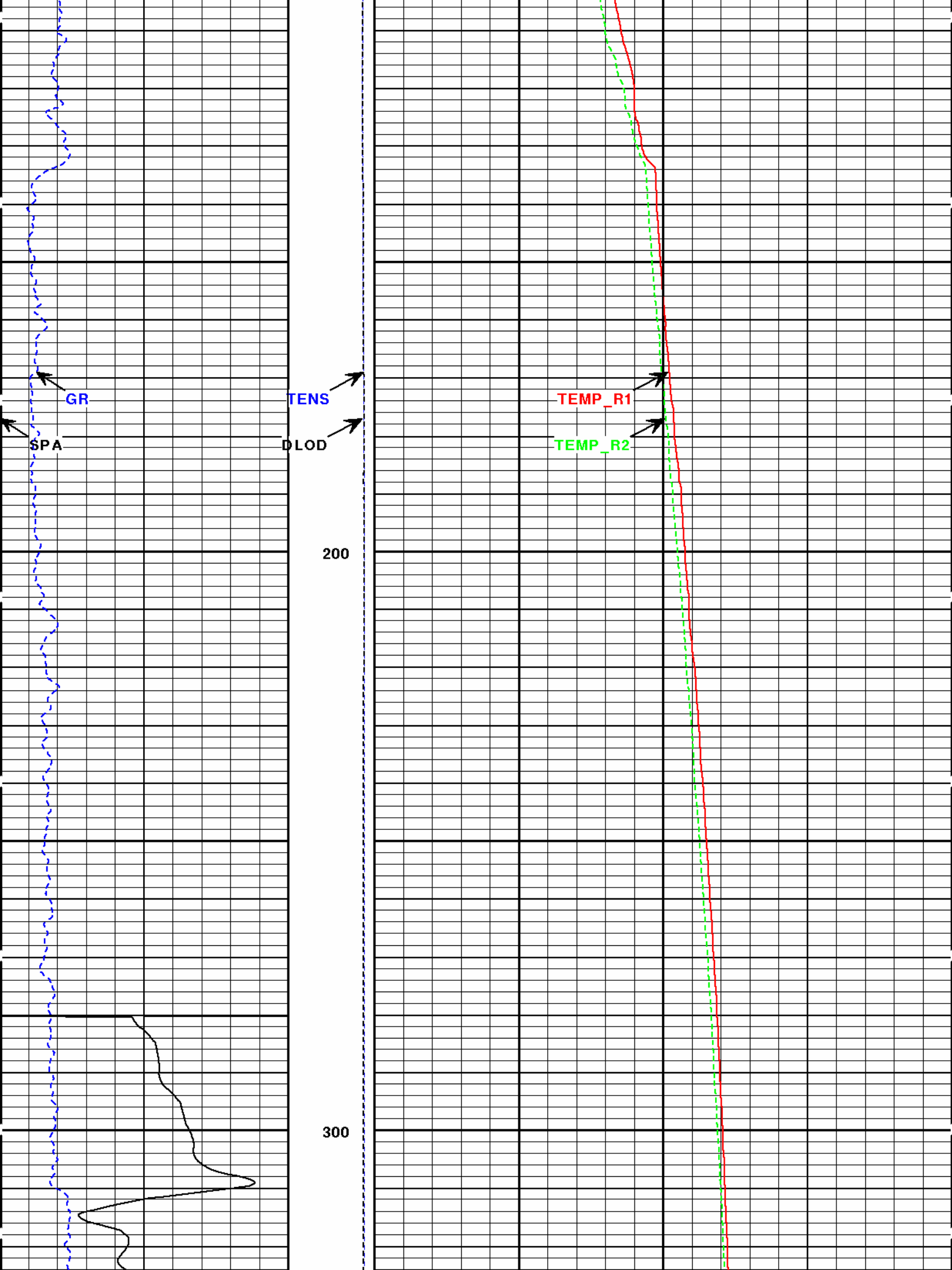
HALLIBURTON

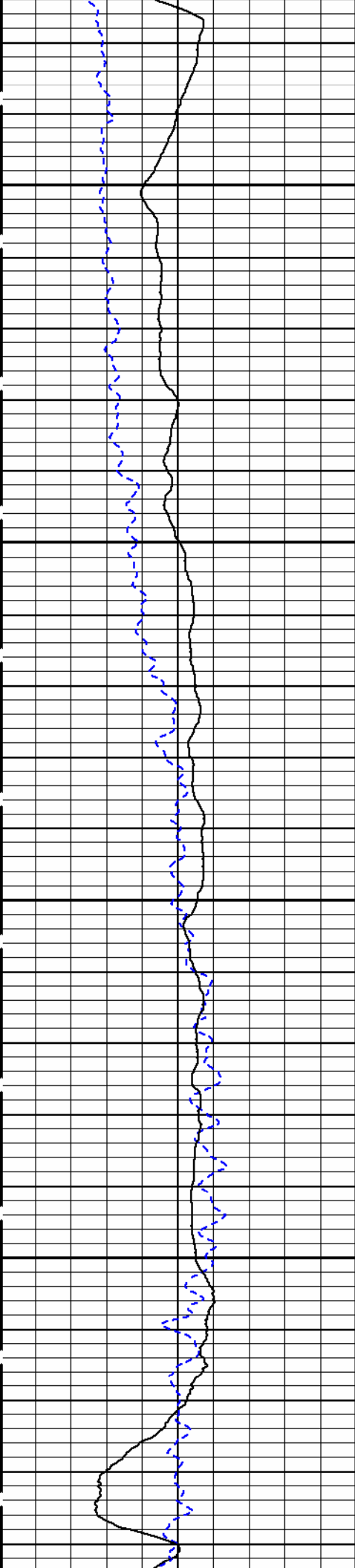
Version No: | hc:3.0
 Data File: MERGE.cls
 Format File: TEMP.TIF.spc
 Plot Time: 2008-09-03 10:56:24
 Database Time: 09:06:35

Top Depth: 78.58
 Bottom Depth: 752.58

GR API		TENS 10000 0	TEMP_R1 DEGF	
0	150		150	250
SPA -]1[+		DL0D 10000 0	TEMP_R2 DEGF	
			150	250
		1:240 FT.		

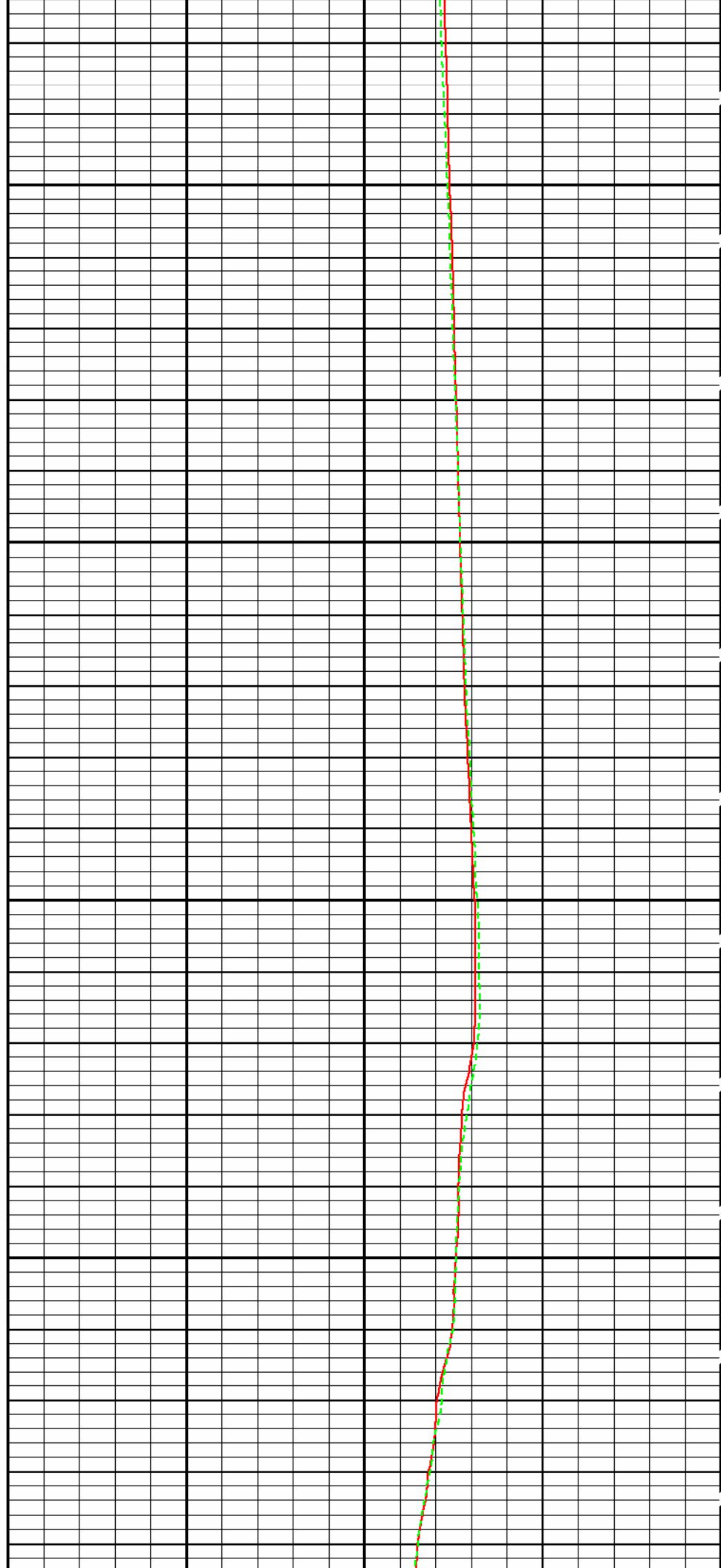


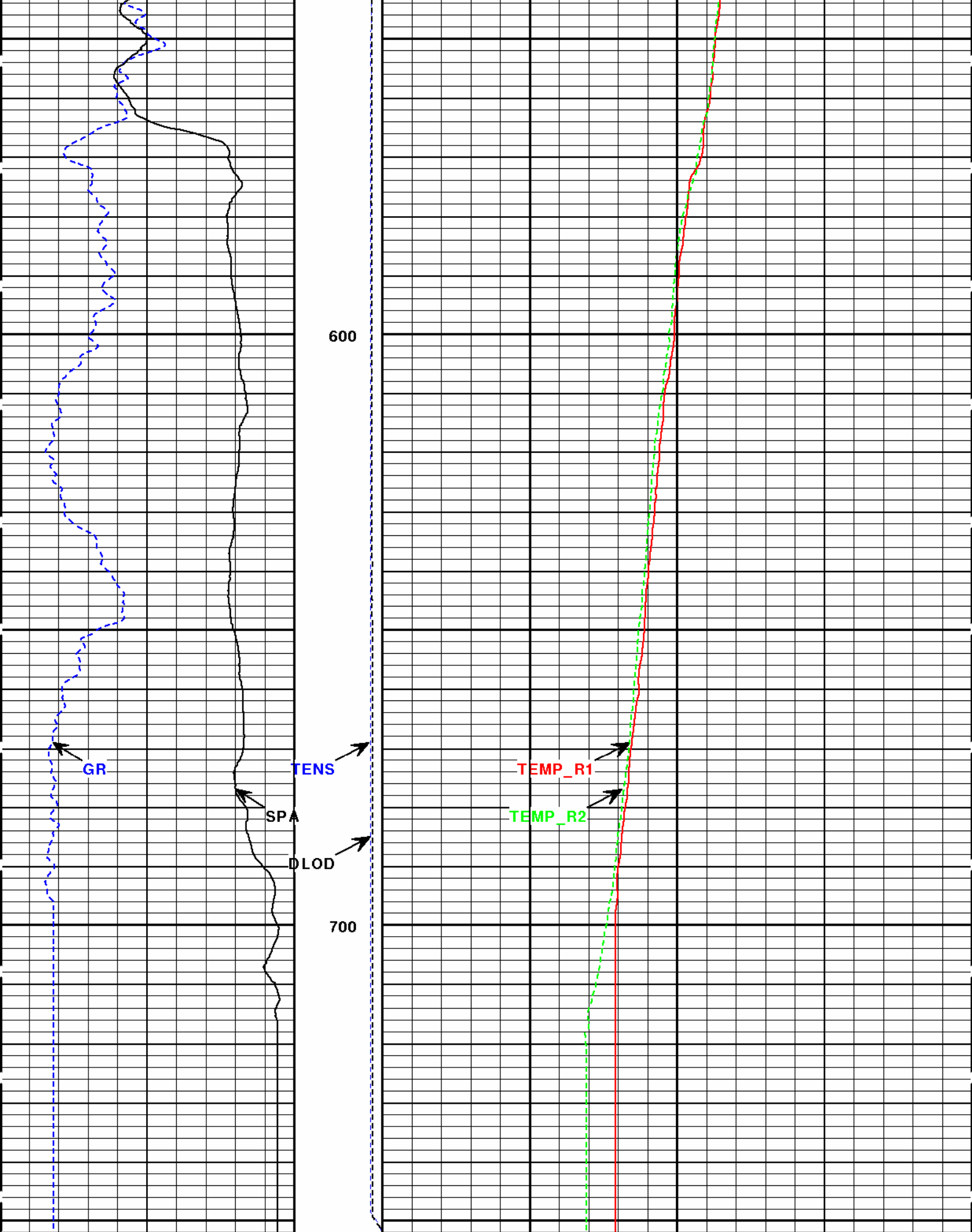




400

500





SPA	PT.	DLOD	TEMP_R2
-][+	10000	0 150	DEGF 250
GR	TENS	TEMP_R1	
API	10000	0 150	DEGF 250

Version No: hc:3.0
Data File: MERGE.cls
Format File: TEMP.TIF.spc
Plot Time: 2008-09-03 10:56:26
Database Time: 09:06:35
Top Depth: 78.58
Bottom Depth: 752.58

COMPANY	VULCAN POWER CO.		
WELL	86A-15		
FIELD	SALT WELLS		
COUNTY	CHURCHILL	STATE	NV

HALLIBURTON	HIGH RESOLUTION INDUCTION GAMMA 5",2"=100'
-------------	---